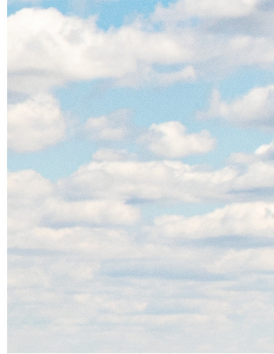
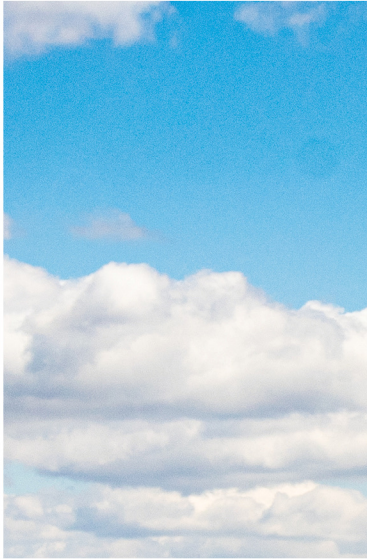


Chamber of
COMMERCE
Chillicothe • Ross



EFFECTIVE OCT 1, 2024

**MEMBERSHIP
BENEFITS**



45 East Main Street Chillicothe, Ohio 45601 / 740.702.2722

OUR MISSION

The Chillicothe Ross Chamber of Commerce serves to connect our investors and partners to resources that will allow them to drive growth and change in our community

OUR VISION

We exist to make Ross County the best place for business and people to grow and thrive.

With more than 750 business members the Chillicothe Ross Chamber of Commerce is the premier business organization in Ross County. We **Create** programs and services valued by our diverse membership. We **Connect** our members to one another and provide opportunities to achieve business success and facilitate community growth. We **Collaborate** with area businesses, government entities, education, and other strategic partners to stimulate regional prosperity for the benefit of all.

For many members, supporting the mission of the Chillicothe Ross Chamber of Commerce is reason enough to join. For those who desire a more direct return on their investment, members enjoy ample opportunities for exposure, developing professional relationships throughout the county, and unique access to champion initiatives that influence the economic vitality of the region.

Investment levels are specifically designed to help support your goals. Membership levels allow you to access resources and meaningful engagement. **Join the movement, you'll be glad you did!**

Individuals may join as Friends of the Chamber to attend limited events and receive member pricing. **The cost is \$75 per member.** *Realtors with brokerages with existing memberships will be permitted to join at the Friends rate of \$75 per member and will receive the benefits offered to the brokerage.*

ALL CHAMBER MEMBERS RECEIVE THESE CORE BENEFITS (value: \$150)

- + Invitations to Chamber events and programs at member prices
- + Two free entries to the monthly Business After Business events.
- + Access to marketing opportunities at member prices
- + Annual subscription to Chamber communications to stay informed (regular newsletters and e-blasts)
- + Access to full-time professional Chamber staff



TOP INVESTORS

SHAPE THE FUTURE OF ROSS COUNTY

You understand economic sustainability and a prosperous future for the Chillicothe area doesn't happen by accident. You recognize leadership is necessary for community advancement, economic vitality, and developing the next generation of workers. By being a Chamber Top Investor, you are influencing our future. This investment level includes all Core Benefits PLUS additional benefits for your leadership.

COMMUNITY CHAMPION

\$20,000 / VALUE \$50,250

ALL TOP INVESTOR BENEFITS, PLUS:

Premium Listing in Online Directory (pinned to top of two categories, listed in 6 categories, 10 locations/affiliates)

Chamber Mailing List (Excel file or printed labels, 750 contacts, updated quarterly, emails not included, fulfilled on demand, 4 requests per year)

9 months Rotating Banner Ad in online Business Category (2 categories, including at least one premium position)

First Right to sponsor Chamber and Business After Business events (based on availability)

Free table at our annual Business Expo

\$3,000 credit to use for Chamber advertising, event sponsorship, or Chamber Foundation donation

Unlimited & preferred access to our Chamber conference room.

Digital Business CEO Profile (featured in newsletter, website)

Investor level recognition on all Chamber e-blasts & newsletters (1st row, logo with link)

Preferred seating at all Chamber signature events

Investor level recognition on Chamber website homepage (logo with link)

50% discount on 2nd business membership at same or lower tier (same business owner)

VISIONARY

\$10,000 / VALUE \$19,850

ALL TOP INVESTOR BENEFITS, PLUS:

Premium Listing in Online Directory (pinned to top of primary category, 6 categories, 6 locations/affiliates)

Chamber Mailing List (Excel file, 750 contacts, updated quarterly, emails not included, fulfilled on demand, 4 requests per year)

9 months Rotating Banner Ad in online Business Category (primary category; premium option available.)

\$1,500 credit to use for Chamber advertising, event sponsorship, or Chamber Foundation donation.

Free table at our Annual Business Expo

Digital Business CEO Profile (featured in newsletter, website)

Investor level recognition on all Chamber e-blasts and newsletters (2nd row, logo with link)

Six free Chamber conference room rentals and preferred access to use

50% discount on 2nd business membership at same or lower tier (same business owner)

INFLUENCER

\$5,000 / VALUE \$12,800

ALL TOP INVESTOR BENEFITS, PLUS:

3 categories, 4 locations/affiliates in Online Directory

Chamber Mailing List (Excel file, 750 contacts, updated quarterly, emails not included, fulfilled on demand, 2 requests per year)

6 months Rotating Banner Ad in online Business Category (premium category)

50% discount on 2nd business membership at same or lower tier (same business owner)

\$1,000 credit to use for Chamber advertising, event sponsorship or foundation donation.

Free Table at annual Business Expo

Digital Business CEO Profile (featured in newsletter, website)

Four free Chamber conference room rentals and preferred access to use



TOP INVESTORS

CONTINUED



ENJOY PREMIER VISIBILITY & BUSINESS RESOURCES

MARKETING & PROMOTION

Chamber Member Decal/Window Cling or Plaque

Enhanced listing in the online Business Directory

Enhanced Ribbon Cutting (Chamber-promoted on calendar, photo in Chamber newsletter, framed photo and access to link to entire photo catalog, FB Live event, ribbon & scissors, CEO, staff and board members attend event, invitations to elected officials)

Post Job Listings on Chamber website (unlimited postings)

Receive referrals to your business (Chamber staff, Online Directory)

Opportunities to advertise (Chamber website, E-blasts, Business Directory, Chamber newsletters, Relocation and Community Guide, Map)

Eligible to sponsor Chamber events and Business After Business

Eligible to participate in co-op advertising opportunities (digital billboards, TV, print/radio, etc., as available)

Sharing of social media posts, eligible to submit news for inclusion on Chamber news page and newsletters.

Opportunities to advertise (Chamber website, E-blasts, Business Directory, Chamber newsletters, Relocation and Community Guide, Map)

RELATIONSHIPS & BUSINESS-BUILDING

Unlimited tickets/month for Business After Business mixers

Preferred access to Chamber committees and Board of Directors

1 guaranteed registration for BIG (Business, Industry, Government) program

All Top Investors (Community Champion, Visionary, Influencer) receive the benefits on this page.

ADVOCACY AND COMMUNICATIONS

Guide direction of Chamber in surveys & polls

Chamber representation of business interests and concerns at all levels of government

Annual subscription to members-only communications to stay informed (Workforce Corner, data, and other reports)

Invitations to policymaker events

One-on-One Advocacy support

DISCOUNTS AND SAVINGS PROGRAM

Access to SOCA benefits (group health insurance plan, energy savings program, 401k plan, discount on shipping)

Customized Annual Engagement Plan



TOP INVESTOR TIERS

	ACHIEVER	INFLUENCER	VISIONARY	COMMUNITY CHAMPION
MEMBERSHIP INVESTMENT	\$2,500	\$5,000	\$10,000	\$20,000
TOTAL VALUE	\$6,200	\$12,800	\$19,850	\$50,250
Tickets per month to Business After Business	6 add'l	Unlimited	Unlimited	Unlimited
Annual subscription to Chamber communications	X	X	X	X
Access to full-time professional Chamber staff	X	X	X	X
Access to marketing opportunities at member pricing	X	X	X	X
Invitation to Chamber events & programs at member pricing	X	X	X	X
Chamber Decal/Window Cling/Plaque	X	X	X	X
Access to conference room rental	3 FREE	4 FREE	6 FREE	UNLIMITED
Listing in Online Directory	Enhanced	Enhanced	Enhanced	Enhanced
Ability to post job openings on Chamber job board	Unlimited	Unlimited	Unlimited	Unlimited
Ribbon cutting/Open House events*	Premium	Premium	Premium	Premium
Access to SOCA benefits (group health plans, chamber energy discounts, etc.)	X	X	X	X
Chamber representation of business interests and concerns at all levels of government	X	1-on-1	1-on-1	1-on-1
Guide direction of Chamber initiatives through survey and polls	X	X	X	X
Receive referrals to your business	X	X	X	X
Access to B.I.G/Leadership programs	X	1 Guar	1 Guar	1 Guar
Chamber Mailing List (Excel file or printed labels)	1x/Year Excel	2x/Year Excel	4x/Year Excel	4x/Year PDF or Excel
Access to Chamber committees and Board membership	X	X	X	X
Discount on Second Membership*	50%	50%	50%	50%
Ability to sponsor Chamber events (based on availability)	X	X	X	X
Digital Media Share Campaign	X	X	X	X
Eligible for Co-Op Advertising Opportunities	X	X	X	X
Rotating Business Ad in Online Business Category	3-Month*	6-Month*	9-Month*	12-Month*
Free table at annual Business Expo	X	X	X	X
Credit to use for Chamber advertising, event sponsorship, or Chamber Foundation donation	\$500	\$1,000	\$1,500	\$3,000
Customized Annual Engagement Plan	**	**	**	X
Digital Business CEO Profile (featured in newsletter and on Chamber website)	**	**	**	X
Invitation to Chamber policymaking events		X	X	X
Investor level recognition on all Chamber e-blasts and newsletters			X	X
Investor level recognition on Chamber website home page (logo with link to your website)*			X	X
Preferred seating at all Chamber signature events				

* = See specific tier for details

** = Indicates benefit is available a la carte

ASCEND TO NEW LEVELS OF EXCELLENCE

ACHIEVER

Your business is thriving, but you know there is a new level you can reach. Expanded opportunities to promote your business and helping to shape the community's future are important to you.

The Achiever level positions your company or business as a forward-thinking changemaker in our community. Membership at this level is a smart investment for your business. This investment level includes all Core Benefits PLUS additional benefits to elevate your brand!

Gain Additional Visibility and Business Resources

MARKETING & PROMOTION

Chamber Member Decal and Window Cling

Enhanced listing in the online Business Directory (Standard features, plus bolded listing, logo, 1,600-word description, two additional categories, up to 3 locations/affiliates, photo gallery, videos)

Premium Ribbon Cutting (Chamber-promoted on the calendar, photo in Chamber newsletter, FB Live event, framed photo, ribbon & scissors, CEO, staff and board members attend the event, invitations to media.)

Post Job Listings on the Chamber website (unlimited postings)

Chamber Mailing List (Excel file, 750 contacts, updated quarterly, emails not included, fulfilled on demand, one request per year)

Receive referrals to your business (Chamber staff, Online Directory)

Opportunities to advertise (Chamber website, E-blasts, Business Directory, Chamber newsletters, Relocation and Community Guide, Map)

3-month rotating secondary page banner ad in online Business Directory (primary category, link to listing, camera-ready logo, select month for ad)

50% discount on 2nd business membership at same or lower tier (same owner)

\$500 credit to use for Chamber advertising, event, sponsorship, or Chamber Foundation donation

Free table at annual Business Expo.

Eligible to participate in co-op advertising opportunities (digital billboards, TV, print/radio, etc., as available)

Digital Media Share Campaign



"At Bo Lacey Construction, we are incredibly grateful to have been a part of the Chillicothe Ross Chamber of Commerce for several years! Their unwavering support and dedication have been game-changers for our business. From networking opportunities to the constant support of our business, the Chamber consistently goes above and beyond to help us thrive. Being a member feels like part of a vibrant community where everyone is committed to each other's success.

Thank you, Chillicothe Ross Chamber of Commerce, for your constant encouragement and support – we couldn't do it without you!"

Madison Hoehn - Bo Lacey Construction

RELATIONSHIPS & BUSINESS-BUILDING

Six additional tickets/month for Business After Business mixers (10 - 12x/ year)

Build connections through Chamber committees

Access to BIG (Business, Industry, Government) program

ADVOCACY AND COMMUNICATIONS

Guide direction of the Chamber by engaging in surveys & polls

Chamber representation of business interests and concerns at all levels of government

Annual subscription to Chamber communications to stay informed (weekly newsletters, e-blasts, and reports)

DISCOUNTS AND SAVINGS PROGRAM

Access to three free Chamber Board Conference Room Rentals (as available)

Access to SOCA benefits (group health insurance plan, energy savings program, 401k plan, discount on shipping)

Annual Investment: \$2,500

Valued at \$6,200

All benefits must be used within membership period and do not carry over to subsequent years

EXPAND YOUR INFLUENCE, INCREASE
YOUR ACCESS

INVESTOR

You appreciate the Chillicothe Ross Chamber of Commerce is working on your behalf to keep the cost of doing business affordable and advocating for favorable business policies.

The Investor level helps position your company as a market leader and offers opportunities for strategic engagement. This makes membership at this level a smart investment for your business. This investment level includes all Core Benefits **PLUS** additional benefits to elevate your brand!

Gain Additional Visibility and Business Resources

MARKETING & PROMOTION

Chamber Member Decal and Window Cling

Enhanced listing in the online Business Directory

(Standard features, plus bolded listing, logo, 1,600-word description, two additional categories, up to 3 locations/affiliates, photo gallery, videos)

Premium Ribbon Cutting (Chamber-promoted on the calendar, photo in Chamber newsletter, FB Live event, framed photo, ribbon & scissors, CEO, staff and board members attend the event, invitations to media.)

Post Job Listings on the Chamber website (unlimited postings)

Chamber Mailing List (Excel file, 750 contacts, updated quarterly, emails not included, fulfilled on demand, one request per year)

Receive referrals to your business (Chamber staff, Online Directory)

Sharing of social media posts, eligible to submit news for inclusion on Chamber news page and newsletters.

Opportunities to advertise (Chamber website, E-blasts, Business Directory, Chamber newsletters, Relocation and Community Guide, Map)

3-month rotating secondary page banner ad in online Business Directory (primary category, link to listing, camera-ready logo, select month for ad)

50% discount on 2nd business membership at same or lower tier (same owner)

Eligible to participate in co-op advertising opportunities (digital billboards, print/radio, etc., as available)

Eligible to sponsor events (Based on availability)

RELATIONSHIPS & BUSINESS-BUILDING

4 additional tickets/month for Business After Business mixers (10 - 12x/ year)

Build connections through Chamber committees

Access to BIG Leadership program (Business, Industry, Government)



"The Chamber offers excellent business opportunities through networking events, educational classes, and promotions. But what makes this Chamber stand above the rest is that the members genuinely support each other and are advocates for one another. We see the Chamber Staff supporting every business and always reaching out to see if they can help in any way.

From a new ground-breaking project to bringing in new ideas to support our downtown to a car crashing through my front door, they truly have been here through it all for me, and I can't thank them enough for all they do for myself and the community!"

Bobbi Blanton - The Coffee Hub & Brick Haven Spa, Cranberry Boutique, 2024 Entrepreneur of the Year

ADVOCACY AND COMMUNICATIONS

Guide direction of the Chamber by engaging in surveys & polls

Chamber representation of business interests and concerns at all levels of government

Annual subscription to Chamber communications to stay informed (weekly newsletters, e-blasts, and reports)

DISCOUNTS AND SAVINGS PROGRAM

Access to two free Chamber Board Conference Room Rentals (as available)

Access to SOCA benefits (group health insurance plan, energy savings program, 401k plan, discount on shipping)

Annual Investment: \$750

Valued at \$5,505

All benefits must be used within membership period and do not carry over to subsequent years.

chillicotheohio.com

MEMBERSHIP BENEFITS
CHILICOTHE ROSS CHAMBER OF COMMERCE

PROMOTE YOUR BUSINESS & GAIN
VISIBILITY IN THE COMMUNITY

GROWTH

While you are busy running your business, the Chillicothe Ross Chamber of Commerce works for you throughout the year. The Growth level provides marketing tools and opportunities to promote your business. Peer-to-Peer engagement, educational sessions, and sharing best practices will save you time and help grow your business.

This investment level includes all CORE Benefits PLUS additional benefits designed for your growing enterprise!

Gain Additional Visibility and Business Resources

MARKETING & PROMOTION

Chamber Member Decal and Window Cling

Enhanced listing in the online Business Directory (Standard features, plus bolded listing, logo, 1,600-word description, additional category, 1 location, photo gallery, videos)

Enhanced Ribbon Cutting (Chamber-promoted on calendar, link provided to online photos, FB Live event, ribbon & scissors, CEO, staff attend event)

Post Job Listings on Chamber website (unlimited postings)

Digital Media Share Campaign (One Facebook shoutout/year; Chamber will share FB, IG, LinkedIn, posts upon request; eligible to submit news items for publication)

Chamber Mailing List (PDF of labels, 750 contacts, updated quarterly, emails not included, fulfilled on demand, 1 request per year)

Receive referrals to your business (Chamber staff, Online Directory)

Opportunities to advertise (Chamber website, E-blasts, Business Directory, Chamber newsletters, Relocation and Community Guide, Chamber Maps)

Eligible to sponsor Chamber events (based on availability)

50% discount on 2nd business membership at same or lower tier (same owner)

RELATIONSHIPS & BUSINESS-BUILDING

2 additional tickets/month for Business After Business mixers (10 - 12x/ year)

Build connections through Chamber committees

Access to BIG program (Business, Industry, Government)



"The Chillicothe Ross Chamber of Commerce has been instrumental in growing our presence in the community! While The RecW (formerly known as The Recording Workshop) has been in Chillicothe for over 50 years, the one thing we heard the most was, "I never knew this was here!" The chamber has genuinely changed that for us. We have developed friendships, allies, and partnerships with other businesses and organizations. One of our strongest collaborations has been with Ohio Creations and Without Her Film. We were able to teach a class on sound for pictures for their "Make Your Own Movie" Series, and now they are using our studios for all their post-production for their film projects. It's been a beautiful partnership that the Chamber introduced and nurtured.

Every staff member has been our champion in helping us overcome our challenges, and we could not be more grateful to every one of them. Thank You, All!!"

Brooke Pollard - Student Services

ADVOCACY AND COMMUNICATIONS

Guide direction of Chamber by engaging in surveys and polls

Chamber representation of business interests and concerns at all levels of government

DISCOUNTS AND SAVINGS PROGRAM

Access to 1 free Chamber Board Conference Room Rental (as available)

Access to SOCA benefits (group health insurance plan, energy savings program, 401k plan, discount on shipping)

Annual Investment: \$350

Valued at \$2,790

All benefits must be used within membership period and do not carry over to subsequent years

MEMBERSHIP BENEFITS

CHILLICOTHE ROSS CHAMBER OF COMMERCE

chillicotheohio.com

ENGAGE AND BUILD YOUR NETWORK CONNECTION

Who you know can help open doors, increase your visibility, and connect you to the resources you need. The Chillicothe Ross Chamber of Commerce provides you with a platform to develop relationships, participate in learning opportunities, and access resources to foster your business growth.

The Connection level includes all Core Benefits and provides you with opportunities to engage with over 750 members, gain visibility among Chamber members and within the community, stay informed, and access business resources. This level of investment is designed to give you tools for success.

MARKETING & PROMOTION

Chamber Member Decal and Window Cling

Standard listing in online Business Directory (Company/Organization, address, phone number, 240-word description, 1 category, 1 location, SEO, logo, web and social media and Google Map link, hours of operation)

Ribbon Cutting (Chamber-promoted on calendar, digital copy of ribbon cutting photo, ribbon & scissors, Chamber staff attend event)

Access to Online Membership Directory

Receive referrals to your business (Chamber staff, Online Directory)

Opportunities to advertise (Chamber website, E-blasts, Business Directory, Chamber newsletters, Relocation and Community Guide, Chamber Maps)

RELATIONSHIPS & BUSINESS-BUILDING

2 additional tickets/month for Business After Business mixers (10 - 12x/ year)

Build connections through Chamber committees

Access to BIG & Leadership programs (Business, Industry, Government)

ADVOCACY AND COMMUNICATIONS

Guide direction of Chamber by engaging in surveys and polls

Chamber representation of business interests and concerns at all levels of government

All benefits must be used within membership period and do not carry over to subsequent years.

chillicotheohio.com



"The Chamber of Commerce's support for local businesses has really boosted our sales and brought our community together. They have been there for us since the beginning and continuously support us. Their events and initiatives make our town a better place for everyone. They have been absolutely awesome in helping our small business grow by connecting us with great people and opportunities.

Thanks for all you do!"

Sandra Ardhani - The Coop Chillicothe

DISCOUNTS AND SAVINGS PROGRAM

Access to Chamber Board Conference Room Rentals (as available)

Access to SOCA benefits (group health insurance plan, energy savings program, 401k plans, discount on shipping)

Annual Investment: \$225

Valued at \$1,670

(This tier is ONLY available for businesses organizations with fewer than 10 employees)

MEMBERSHIP BENEFITS
CHILICOTHE ROSS CHAMBER OF COMMERCE



BASIC TIERS

	CORE	CONNECTION	GROWTH	INVESTOR
MEMBERSHIP INVESTMENT	\$75	\$225	\$350	\$750
TOTAL VALUE	\$150	\$1,670	\$2,790	\$5,505
Tickets per month to Business After Business	2	2 add'l	3 add'l	4 add'l
Annual subscription to Chamber communications	X	X	X	X
Access to full-time professional Chamber staff	X	X	X	X
Access to marketing opportunities at member pricing	X	X	X	X
Invitation to Chamber events & programs at member pricing	X	X	X	X
Chamber Decal/Window Cling/Plaque		X	X	X
Access to conference room rental		50% off	1 FREE	2 FREE
Listing in Online Directory		Standard	Enhanced	Enhanced
Ability to post job openings on Chamber job board		Unlimited	Unlimited	Unlimited
Ribbon cutting/Open House events*		Basic	Enhanced	Premium
Access to SOCA benefits (group health plans, chamber energy discounts, etc.)		X	X	X
Chamber representation of business interests and concerns at all levels of government		X	X	X
Guide direction of Chamber initiatives through survey and polls		X	X	X
Receive referrals to your business	X	X	X	X
Access to B.I.G/Leadership programs		X	X	X
Chamber Mailing List (Excel file or printed labels)			ONE	ONE
Access to Chamber committees and Board membership		X	X	X
Discount on Second Membership*			50%	50%
Ability to sponsor Chamber events (based on availability)		**	X	X
Digital Media Share Campaign			X	X
Eligible for Co-Op Advertising Opportunities	**	**	X	X
Rotating Business Ad in Online Business Category		**	**	3 Month
Free table at annual Business Expo				
Credit to use for Chamber advertising, event sponsorship, or Chamber Foundation donation				
Customized Annual Engagement Plan				
Digital Business CEO Profile (featured in newsletter and on Chamber website)				
Invitation to Chamber policymaking events				
Investor level recognition on all Chamber e-blasts and newsletters				
Investor level recognition on Chamber website home page (logo with link to your website)*				
Preferred seating at all Chamber signature events				

** = indicates benefit is available a la carte

chillicotheohio.com



SPONSORSHIP OPPORTUNITIES

Community Forecast Breakfast

PRESENTING SPONSOR – (1 AVAILABLE) \$2,000

Opportunity to address attendees, marketing info on all tables, sit at registration table if desired. Includes logo on all digital and print media. Average attendance is 130

New Member Breakfast

ANNUAL SPONSOR – (1 AVAILABLE) \$1,200

Opportunity to be present at the 4 new member breakfasts that we hold in the year, 1 per quarter and address attendees at each. Signage at the event. Opportunity to address attendees.

Lunch with 12 Strangers

ANNUAL SPONSOR – (1 AVAILABLE) \$4,000

Opportunity to be present at the 12 events that we hold through the year (1 per month) and address attendees at each. Signage at the event. Includes logo on all digital and print media.

Chamber Annual Awards Dinner

PRESENTING SPONSOR – (1 AVAILABLE) \$3,000

Opportunity to address attendees. Logo in all programs and on the big screen. Attendance is 320

SOCIAL HOUR SPONSOR – (1 AVAILABLE) \$2,500

Logo in all programs and on the big screen. Able to put signage at appetizer and beverage stations during social hour. Logo in all programs and on the big screen. Attendance is 320

DESSERT SPONSOR – (1 AVAILABLE) \$1,000

Logo in all programs and on the big screen. Able to put signage at appetizer stations during social hour. Logo in all programs and on the big screen.

RED CARPET SPONSOR – (1 AVAILABLE) \$2,500

Listed in the program as Red Carpet Sponsor with special graphic. Step & Repeat that all attendees get photo in front of with the Red Carpet.

AWARDS SPONSOR – (1 AVAILABLE) \$500

TABLE SPONSOR – (40 AVAILABLE) \$125

Chamber Business Expo

PRESENTING SPONSOR – (1 AVAILABLE) \$2,000

Opportunity to address attendees, logo on signage at the event. Logo on Chamber website and in broadcast emails, and all printed media (flyers, posters, etc.) 1 table at the event is included in this sponsorship. Average attendance is 500

TABLE SPONSOR – (60 Available) \$125

SPONSORSHIP OPPORTUNITIES

Annual Chamber Golf Outing

PRESENTING SPONSOR – (1 AVAILABLE) \$2,500

Opportunity to address attendees, marketing info on all tables. Opportunity to “Host a Hole for the day” at a par 4. Ability to place company supplied banner at entrance to the club. Includes logo on all digital and print media. Social Media shout out. Average attendance is 150

LUNCH SPONSOR – (1 AVAILABLE) \$1,500 Opportunity to address attendees, marketing info on respective tables. Includes logo on all digital and print media. Average attendance is 150

PRO SHOP SPONSOR – (1 AVAILABLE) \$1,000

Pull up banners in Pro Shop. Ability to have company rep present skills prizes to golfers. Includes logo on all digital and print media. Social Media shout out.

BREAKFAST SPONSOR – (1 AVAILABLE) \$750

Opportunity to help serve breakfast and interact with all attendees, marketing info on respective tables. Includes logo on all digital and print media.

BEVERAGE CART SPONSOR - (1 AVAILABLE) \$650

Opportunity to drive the beverage cart and interact with all attendees. Logo on the beverage cart. Includes logo on all digital and print media.

PUTTING GREEN SPONSOR – (1 AVAILABLE) \$500

Opportunity to interact with attendees at the Putting Green. Sign at the Putting Green

AWARDS SPONSOR – (1 AVAILABLE) \$500

DRIVING RANGE SPONSOR – (1 AVAILABLE) \$500

Opportunity to interact with attendees at the Driving Range. Sign at the Driving Range

SKILLS & CHANCE SPONSOR – (1 AVAILABLE) \$500

Company logo displayed on signs posted at the game holes (4 signs per course), Recognition in promotion and advertising of event, Social media shout out

REGISTRATION SPONSOR - (1 AVAILABLE) \$300

Opportunity to sit at registration table. Logo on all registration signs at registration table.

WEATHER SPONSOR – (1 AVAILABLE) \$300

Sign at entrance of the club

HAZARD SPONSOR – (2 AVAILABLE) \$300

Sign at hazard location on the golf course (1 water & 1 sand)

COMFORT STATION SPONSOR - (3 AVAILABLE) \$300

Opportunity to be present at the comfort station location. Ability to hand out promotional items to golfers. Sign with logo. Social media shout out.

HOLE SPONSOR - \$125

Sign with logo

SPONSORSHIP OPPORTUNITIES

Annual Puttin' On The Ritz

PRESENTING SPONSOR – (1 AVAILABLE) \$2,000

Opportunity to address attendees, logo on signage at the event. Logo on Chamber website and in broadcast emails, and all printed media (flyers, posters, etc.) Opportunity to include marketing and/or promotional material in each team packet. Large Company Logo on outside of the Event Packet and front of scorecard. Hole location for golfers to visit – opportunity to market business to attendees. 1 four person team is included in this sponsorship. Average attendance is 100

EAGLE SPONSOR – (1 AVAILABLE) \$500

Medium Logo on signage at the event. Logo on Chamber website and in broadcast emails, and all printed media (flyers, posters, etc.) Medium Company Logo on outside of the Event Packet and back of scorecard. 1 four person team is included in this sponsorship.

BIRDIE SPONSOR – (1 AVAILABLE) \$350

Name on Chamber website and in broadcast emails, and all printed media (flyers, posters, etc.) Small Company Logo on outside of the Event Packet and name on scorecard. 1 four person team is included in this sponsorship.

HOLE SPONSOR – (16 AVAILABLE) \$125

Hole location for golfers to visit – opportunity to market business to attendees. Name on scorecard. Name on Chamber website and in broadcast emails and all printed media (flyers, posters)

Advocacy Breakfast

PRESENTING SPONSOR – (4 AVAILABLE) \$500

Opportunity to address attendees, logo on signage at the event. Logo on Chamber website and in broadcast emails, and all printed media (flyers, posters, etc.) Average attendance is 30

Conference Room Sponsor

\$2,500 FOR 2 YEARS, \$1,000 FOR A YEAR, includes professionally produced plaque with company name and logo featured inside the room; meetings in the room feature the company name in the announcement.

Front Lobby Sponsor Annual

\$1,000 PER YEAR, includes professionally produced plaque with company name and logo featured inside the room; scrolling announcement slide show features business logo as the front lobby sponsor.

WHY JOIN A CHAMBER?



Chambers of Commerce are stronger than ever. By joining, you get members-only perks, exclusive advertising and networking opportunities, and a whole lot of exposure for yourself and your organization. **Get on board and see the difference!**

NETWORKING

It's not just who you know, it's who others know. Networking is powerful.



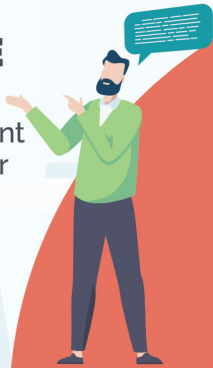
VISIBILITY

Stand out and get noticed in your community.



HAVE A VOICE

Gain a say in what happens in government through the chamber advocacy efforts.



**EXCLUSIVE
MEMBERSHIP
BENEFITS**

CREDIBILITY

Raise your reputation through membership.



DISCOUNTS

Increase your purchasing power through members-only discounts and perks.*



LEARNING

Get a competitive edge over non-members with exclusive training opportunities on a variety of hot topics.



*See your chamber for current discounts available.

MEMBERSHIP BENEFITS

CHILLICOTHE ROSS CHAMBER OF COMMERCE

chillicotheohio.com